

**SOUTH TEXAS RESEARCH FACILITY**  
OFFICE NUMBER: 402-27798

ARCHITECT OF RECORD:  
STEVENS ROSENSTEIN ASSOCIATES  
50 WINDMILL STREET  
NEW YORK, NY 10013  
TEL: 212 684 5800 FAX: 212 684 8888

ARCHITECT:  
STEVENS ROSENSTEIN ASSOCIATES  
6800 SCIMITAR BLVD  
HOUSTON, TX 77054  
TEL: 713 689 9900 FAX: 713 689 7788

LAB PLANNING:  
STEVENS ROSENSTEIN ASSOCIATES  
70 WEST RED OAK LANE  
HOUSTON, TX 77054  
TEL: 944 897 7811 FAX: 944 899 8834

STRUCTURAL ENGINEER:  
STRUCTURES - HANSEN, WALKER, LLC  
2000 WEST SAM HOUSTON PARKWAY SOUTH  
SUITE 1008  
HOUSTON, TX 77058  
TEL: 281 384 8100 FAX: 281 388 0094

MERCHANDISE CONSULTANTS, INC.  
1000 LAMAR, SUITE 650  
HOUSTON, TX 77002  
TEL: 713 886 0800 FAX: 713 886 0888

CIVIL ENGINEER:  
JASTER, QUINN & JAY ANTONIO, LLP  
500 WEST WASHINGTON  
SUITE 200  
SAN ANTONIO, TX 78205  
TEL: 210 349 8988 FAX: 210 349 9146

LANDSCAPE ARCHITECT:  
KIMBLE WENEMER  
7155 OLD PAVY ROAD, SUITE 210  
HOUSTON, TX 77024  
TEL: 713 889 8861 FAX: 713 889 8988

AVIATION SECURITY CONSULTANT:  
AVIATION SECURITY GROUP  
608 BALDWIN STREET  
AUSTIN, TX 78703  
TEL: 512 478 8901

PARKING CONSULTANT:  
WALKER PARKING CONSULTANTS  
1000 EL CAMINO REAL, SUITE 202  
SAN ANTONIO, TX 78208  
TEL: 512 478 8900

MECHANICAL ENGINEER:  
MCKEE ENGINEERS & CONSULTANTS, INC.  
1000 LAMAR, SUITE 650  
HOUSTON, TX 77002  
TEL: 713 886 0800 FAX: 713 886 0888

ELECTRICAL ENGINEER:  
ELECTRICAL ENGINEERS  
1000 LAMAR, SUITE 650  
HOUSTON, TX 77002  
TEL: 713 886 0800 FAX: 713 886 0888

MECHANICAL ENGINEER:  
MCKEE ENGINEERS & CONSULTANTS, INC.  
1000 LAMAR, SUITE 650  
HOUSTON, TX 77002  
TEL: 713 886 0800 FAX: 713 886 0888

MECHANICAL ENGINEER:  
MCKEE ENGINEERS & CONSULTANTS, INC.  
1000 LAMAR, SUITE 650  
HOUSTON, TX 77002  
TEL: 713 886 0800 FAX: 713 886 0888

MECHANICAL ENGINEER:  
MCKEE ENGINEERS & CONSULTANTS, INC.  
1000 LAMAR, SUITE 650  
HOUSTON, TX 77002  
TEL: 713 886 0800 FAX: 713 886 0888

MECHANICAL ENGINEER:  
MCKEE ENGINEERS & CONSULTANTS, INC.  
1000 LAMAR, SUITE 650  
HOUSTON, TX 77002  
TEL: 713 886 0800 FAX: 713 886 0888

MECHANICAL ENGINEER:  
MCKEE ENGINEERS & CONSULTANTS, INC.  
1000 LAMAR, SUITE 650  
HOUSTON, TX 77002  
TEL: 713 886 0800 FAX: 713 886 0888

MECHANICAL ENGINEER:  
MCKEE ENGINEERS & CONSULTANTS, INC.  
1000 LAMAR, SUITE 650  
HOUSTON, TX 77002  
TEL: 713 886 0800 FAX: 713 886 0888

MECHANICAL ENGINEER:  
MCKEE ENGINEERS & CONSULTANTS, INC.  
1000 LAMAR, SUITE 650  
HOUSTON, TX 77002  
TEL: 713 886 0800 FAX: 713 886 0888

MECHANICAL ENGINEER:  
MCKEE ENGINEERS & CONSULTANTS, INC.  
1000 LAMAR, SUITE 650  
HOUSTON, TX 77002  
TEL: 713 886 0800 FAX: 713 886 0888

MECHANICAL ENGINEER:  
MCKEE ENGINEERS & CONSULTANTS, INC.  
1000 LAMAR, SUITE 650  
HOUSTON, TX 77002  
TEL: 713 886 0800 FAX: 713 886 0888

MECHANICAL ENGINEER:  
MCKEE ENGINEERS & CONSULTANTS, INC.  
1000 LAMAR, SUITE 650  
HOUSTON, TX 77002  
TEL: 713 886 0800 FAX: 713 886 0888

MECHANICAL ENGINEER:  
MCKEE ENGINEERS & CONSULTANTS, INC.  
1000 LAMAR, SUITE 650  
HOUSTON, TX 77002  
TEL: 713 886 0800 FAX: 713 886 0888

MECHANICAL ENGINEER:  
MCKEE ENGINEERS & CONSULTANTS, INC.  
1000 LAMAR, SUITE 650  
HOUSTON, TX 77002  
TEL: 713 886 0800 FAX: 713 886 0888

MECHANICAL ENGINEER:  
MCKEE ENGINEERS & CONSULTANTS, INC.  
1000 LAMAR, SUITE 650  
HOUSTON, TX 77002  
TEL: 713 886 0800 FAX: 713 886 0888

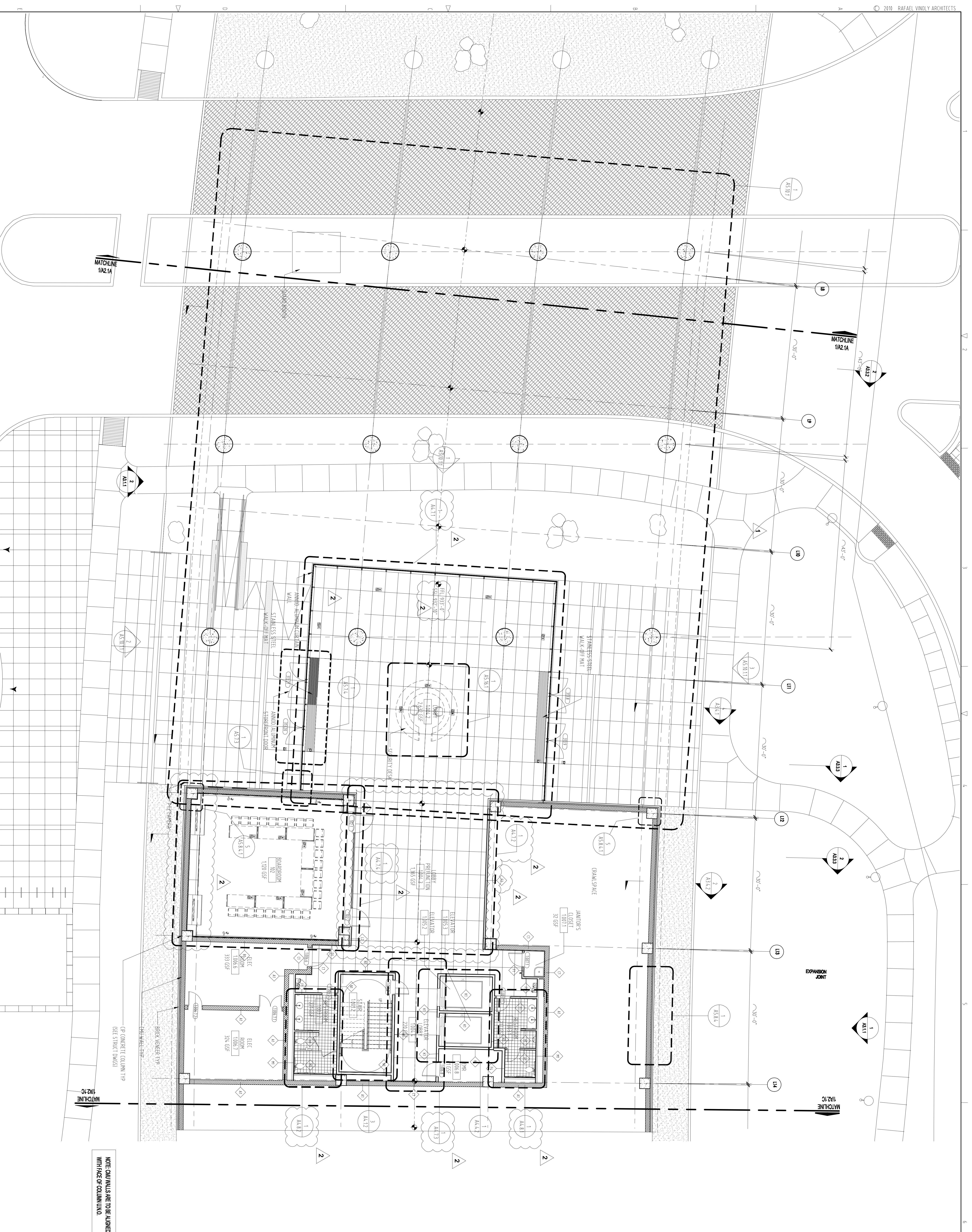
MECHANICAL ENGINEER:  
MCKEE ENGINEERS & CONSULTANTS, INC.  
1000 LAMAR, SUITE 650  
HOUSTON, TX 77002  
TEL: 713 886 0800 FAX: 713 886 0888

MECHANICAL ENGINEER:  
MCKEE ENGINEERS & CONSULTANTS, INC.  
1000 LAMAR, SUITE 650  
HOUSTON, TX 77002  
TEL: 713 886 0800 FAX: 713 886 0888

MECHANICAL ENGINEER:  
MCKEE ENGINEERS & CONSULTANTS, INC.  
1000 LAMAR, SUITE 650  
HOUSTON, TX 77002  
TEL: 713 886 0800 FAX: 713 886 0888

MECHANICAL ENGINEER:  
MCKEE ENGINEERS & CONSULTANTS, INC.  
1000 LAMAR, SUITE 650  
HOUSTON, TX 77002  
TEL: 713 886 0800 FAX: 713 886 0888

MECHANICAL ENGINEER:  
MCKEE ENGINEERS & CONSULTANTS, INC.  
1000 LAMAR, SUITE 650  
HOUSTON, TX 77002  
TEL: 713 886 0800 FAX: 713 886 0888



NOTE: COLUMN WALLS ARE TO BE ALIGNED WITH FACE OF COLUMN UNLESS OTHERWISE NOTED.

KEY PLAN AND NORTH SKIN

THIS DRAWING IS FORWARDED TO 30" X 42" USE GRAPHIC SCALE BELOW TO DETERMINE IF DRAWINGS ARE REDUCED.

FULL SCALE

LEVEL 1 FLOOR PLAN ZONE B

A2.1B

FIRST FLOOR PLAN ZONE B  
SCALE: 1/8" = 1'-0"  
SHEET NUMBER: 1

2010 RAFAEL VINOLY ARCHITECTS